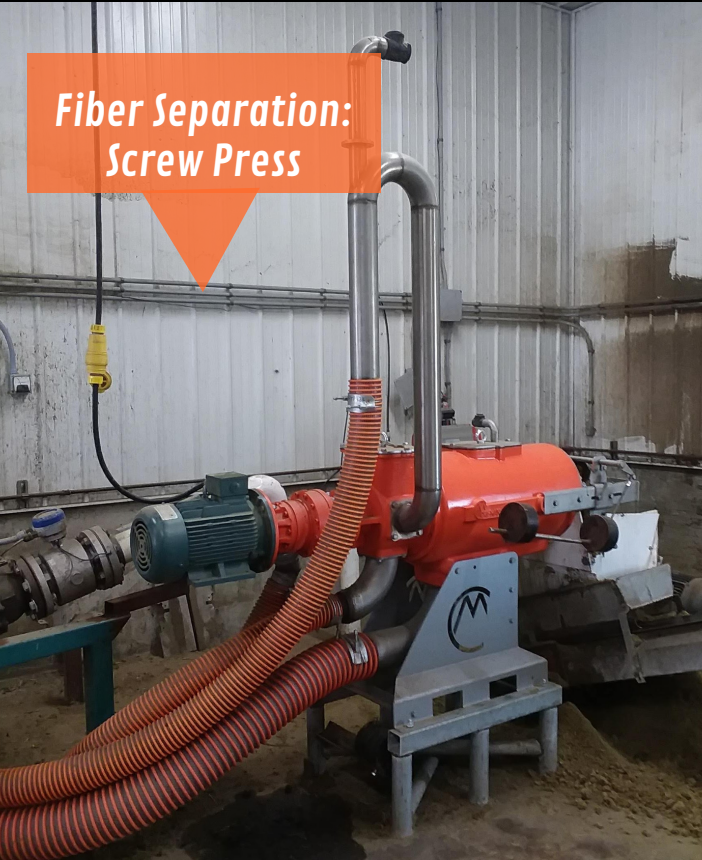


RBRAUN INC. *Nutrient Management Systems*

St. Nazianz, WI



Fiber Separation:
Screw Press



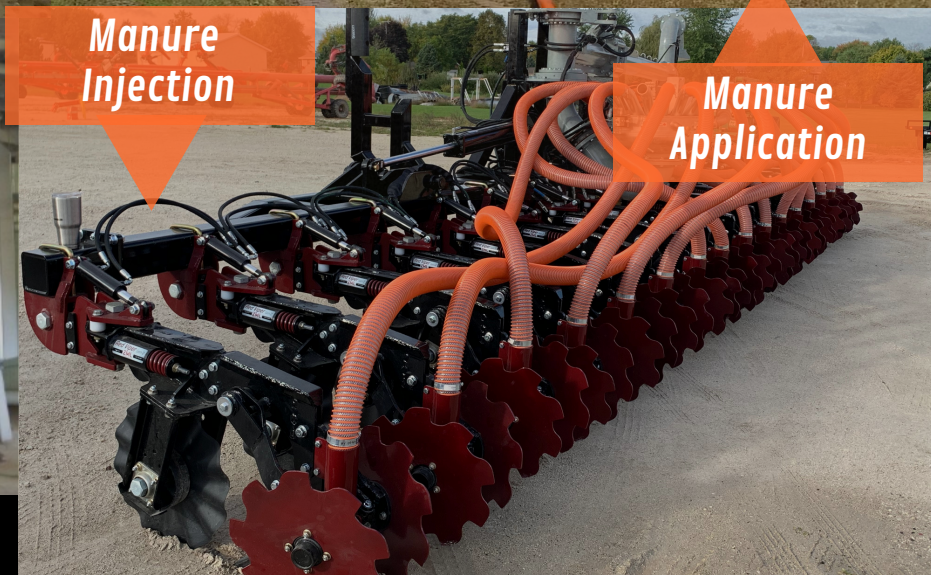
Sand Separation



Manure Injection



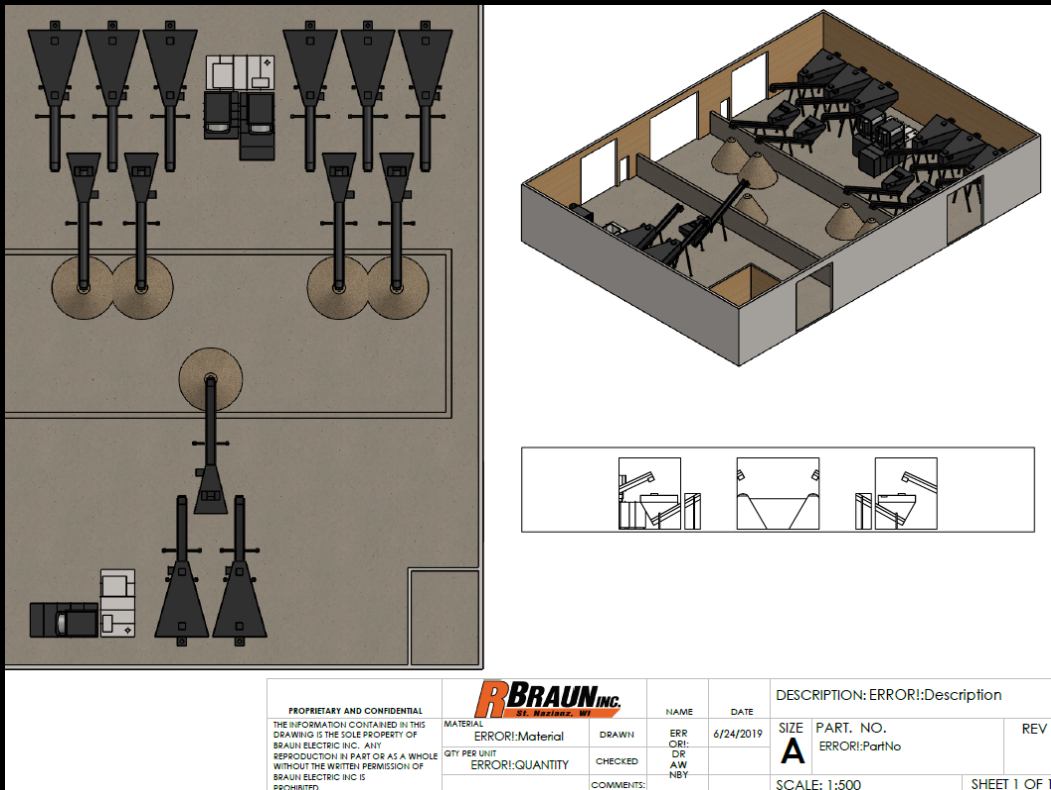
Fiber Separation:
Hygienizing Biocell



Manure Application

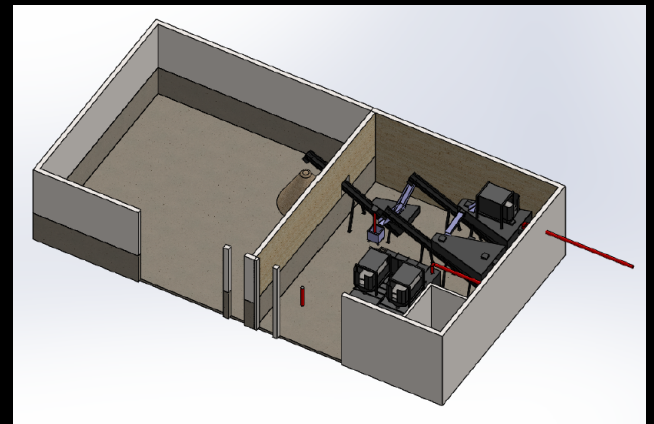
S-MP System

R Braun Inc. will design a sand separation system that best fits your needs, from working with an engineer, to the final layout and installation. Our highly skilled install crew and project managers will take you through the S-MP System from start to finish and beyond. "All you have to do is ask!"



S-MP Advantages:

- Minimal fresh water usage
- Use sand within 5-7 days after separating
- Low horsepower, less electricity
- Low maintenance/labor savings
- Stone and trash removal



THE
S-MP SYSTEM
R BRAUN INC.
ST. MARGARET, NY

Fiber Separation

Screw-Press Separators



Screens

- *Stainless steel screens with geometrical structure, strength and material chemical composition specifically designed for each applicaiton.*

Screw Treatment

- *Innovative coating treatment with mixtures of tungsten carbide and metallic matrix which ensures very high hardness and low brittleness.*

Planetary Gearbox

- *Reduced energy consumption and longer gear life.*

Smart Piping Output

- *Inlet piping designed to leave them empty, and avoid the possible freezing, during the inactivity of the machine.*

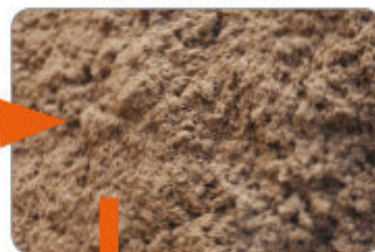
Fiber Separation Hygienizing Biocell



Manure



Liquid fraction



Hygienized solid



Operating Performance:

- **Production:** up to 8 t/day of hygienized solids
- **Hygienisation:** guaranteed pasteurization system (1 hour at 70 degrees Celcius).
- **Drying:** up to 55% of dry material (by adjustment of the HRT)

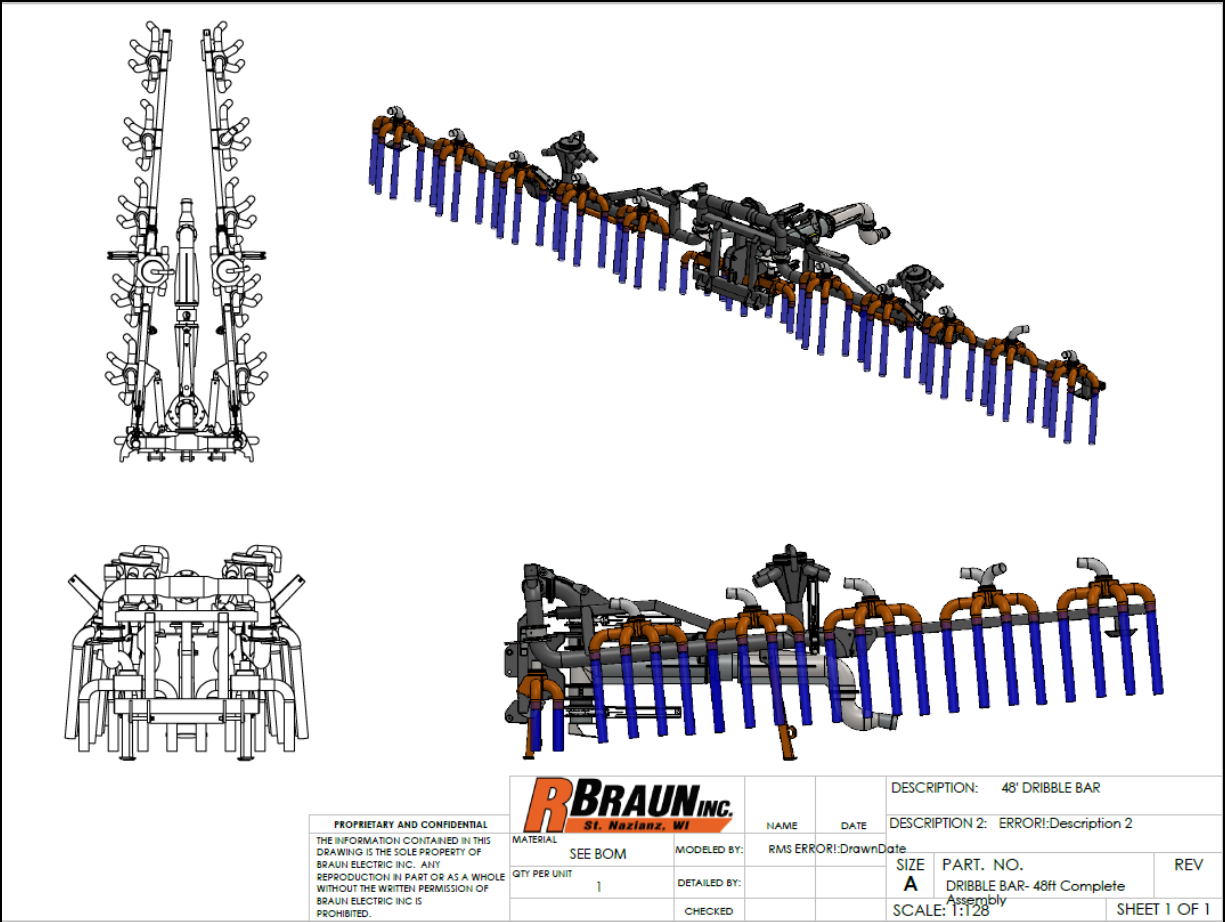


- **Consistant Quality**
- **Financial Savings**
- **Easy to Use**
- **Improved and More Economic Management of Manure**
- **Low Energy Consumption**
- **Additional Storage Not Required**
- **Option of Remote Control**
- **Very Compact Size**
- **Easy to Transport**

RBRAUN INC.
St. Nazianz, WI

Manure Application

R Braun Inc. Dribble Bar



Advantages:

- Cover less plant with dribble hoses every 12"
- Less chance of crop burn off/stunting
- 4" Manifold hosing
- 4" Dribble drop hoses
- Minimized odor due to low pressure/height discharge
- No chance of particle drifting caused by high pressure splash pans toolbar

Manure Injection

RBI ZML Toolbar



- ***Injection not incorporation***
- ***Adjustable hyd. down pressure on row units***
- ***30 degrees of swivel in both directions***
- ***HD greaseless bearings***
- ***24"-30" row spacing***
- ***Multiple shank configurations available***
- ***Rock guard sweep***
- ***Individual row swivel***
- ***Individual flexing closer disc helps reduce clogging***

